

NH fuse-base 160 A, panel mounting (03 760)



Description

Article

Part No.: 03 760

QUADRON® Panel

NH fuse-base 160 A, panel mounting

both sides cleat, with touch protection

size 00 / 1P

System

Mounting plate

Product group 10

Subgroup 03

pack size 12

EAN 4021267037604

Advantages of the product

For safe connection of the leads, the shock protection is split into 2.

Catalog page 2015 : 6/13

eCl@ss 6.1 27142106
eCl@ss 7.1 27142106
ETIM 4.0 EC000067
ETIM 5.0 EC000067

Approvals

Standards

IEC 60269-1:2006 + A1:2009 + A2:2014
IEC 60269-2:2013

Approvals

Germanischer Lloyd



Type number: NH-00

Product data

Electrical data

Rated current (IEC): 160 A
Rated voltage (IEC) AC: 690 V
Rated voltage (IEC) DC: 440 V

Power dissipation:

The power dissipation at a typical load of 80% of the rated current results to 2.7 W.
(The power dissipation for operation with rated current would be 4.2 W.)

rated isolation voltage U_i (AC): 800 V
Rated surge voltage U_{imp} : 6 kV
max. permitted voltage (IEC) AC: 1000 V
max. permitted voltage (IEC) DC: 1000 V

breaking capacity with fuses: 50 kA

for fuse links IEC 60269-2 / DIN VDE 0636-201 size 00 up to 12W power dissipation

Mechanical data

W x H x D: 36 x 147 x 88

Weight: 15.5 kg/100

Poles: 1-pole

Terminal points

clamp-type terminals :

1,5 - 70 mm²

flexible cables with wire-end ferrule,

stranded round cables,

la. Cu max. 12 mm wide, max. 10 mm thick

Md 3 Nm

(flexible cables of maximum cross-section may not fit when using wire-end ferrule)

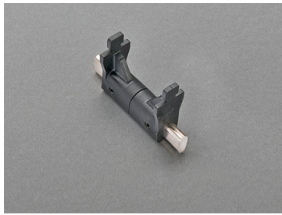
Material properties

Main body: temperature stability 125°C,
self-extinguishing in acc. to UL 94,
creepage resistance CTI 200,
halogen-free

Contacts: spring-loaded copper contacts, silver plated

Shock temperature stability 125°C,
protection self-extinguishing in acc. to UL 94,
cover: creepage resistance CTI 200,
halogen-free

Accessories



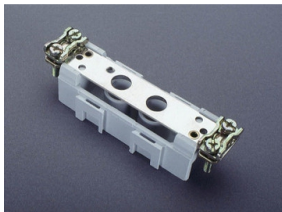
03 161
knife link 160 A
size 00



03 502
NH fuse extractor handle
open
size 000 - 3



03 519
neutral conductor 160 A
screw, both sides



03 620
neutral conductor 160 A
cleat, both sides



79 448
grip lug cover
for NH fuse base
size 00